

**UCLA** Jonsson Comprehensive Cancer Center

## Dennis Slamon awarded Sjöberg Prize for pioneering cancer research

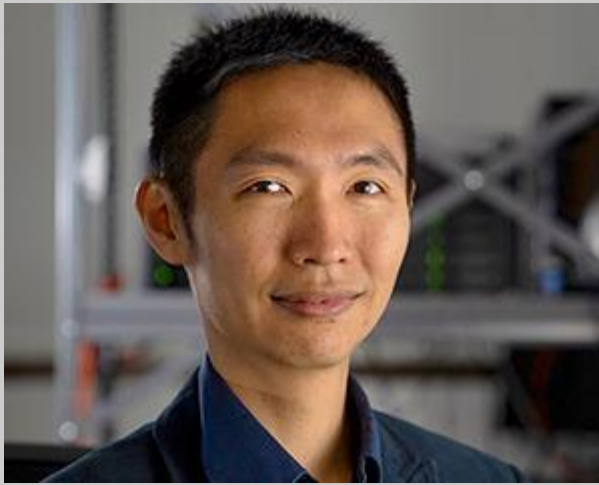
Dr. Dennis Slamon, director of the Revlon/UCLA Women's Cancer Research Program, has been named a co-winner of the 2019 Sjöberg Prize by the Royal Swedish Academy of Sciences and Sweden's Sjöberg Foundation. He was honored for his groundbreaking research that led to the development of successful targeted cancer therapies. [\[Read story\]](#)



## Physician-scientist selected to promote diversity

Dr. Fola May was selected by the American Gastroenterological Association for its new program to help promote diversity in the field

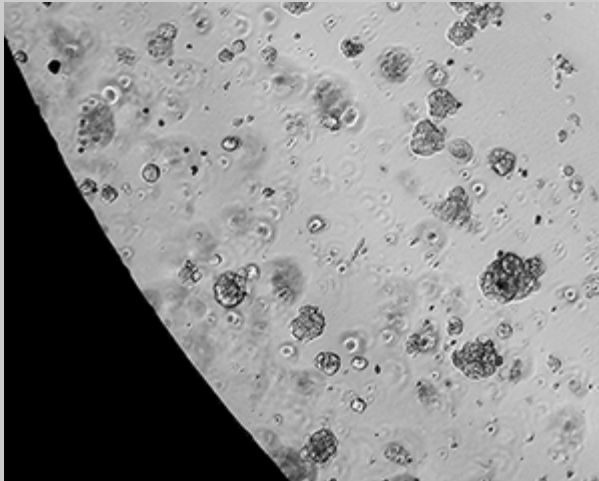
[Read more](#)



### Melanoma researcher awarded grant from the ASA

Willy Hugo to receive \$100,000 grant that supports emerging leaders in dermatology who are focused on understanding and treating skin cancer

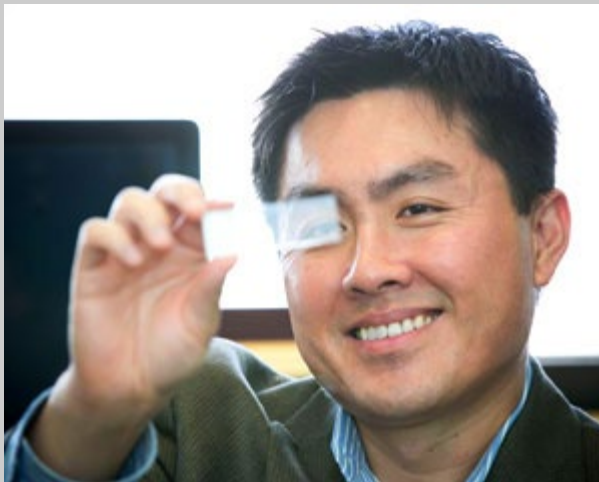
[Read more](#)



### Lab-grown mini tumors could help treat rare cancers

UCLA scientists have developed a new method to quickly screen hundreds of drugs in order to identify treatments that can target specific tumors

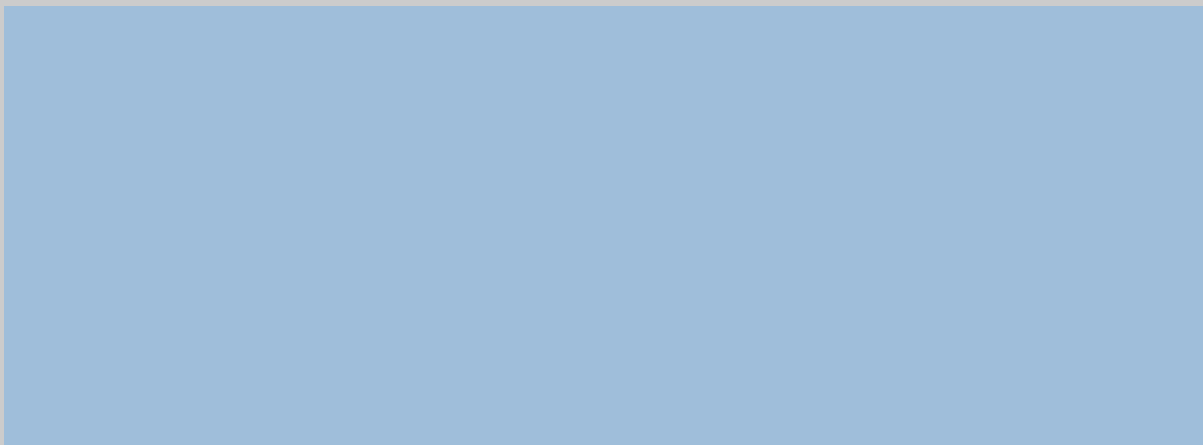
[Read more](#)



### Scientist awarded grant to develop melanoma treatments

Dr. Roger Lo to receive three-year, \$600,000 grant to better treat aggressive melanoma driven by so-called RAS mutations

[Read more](#)





## Join us for Taste for a Cure 2019

The Jonsson Cancer Center Foundation is excited to announce its signature event Taste for a Cure will take place on Friday, April 26 at the Beverly Wilshire Hotel. This year's theme, "A Culinary Journey through Asia," will feature restaurants curated by Elizabeth An, CEO of the House of An and Crustacean Beverly Hills. Superb wines, sakes, and beers will be paired with Asian cuisine in an exceptional tasting menu. Tickets are limited and all proceeds will benefit highest priority cancer research at the JCCC. [Click here](#) for additional details and to purchase your tickets.



### Immunotherapy before surgery may help more than afterward

UCLA-led research could be step toward new checkpoint inhibitor-based therapies for glioblastoma

[Read more](#)

### Shorter course of radiation therapy effective in treating prostate cancer

Men can safely undergo higher doses of radiation over a shorter period of time and still have the same successful outcomes as from longer course of treatment



[Read more](#)



### Prostate tumor characteristics could improve diagnosis, treatment

Collaborative study identifies set of characteristics in tumors that determine if they can be seen by MRI

[Read more](#)



### Immunologist receives grant to research brain tumor treatments

Dr. Robert Prins awarded \$750,000 grant from the Brain Tumor Funders' Collaborative to develop combo therapy for glioblastoma

[Read more](#)

## Funding opportunities

As a member, you can access all the latest intramural and extramural research grant opportunities via our UCLA CCLE online resource

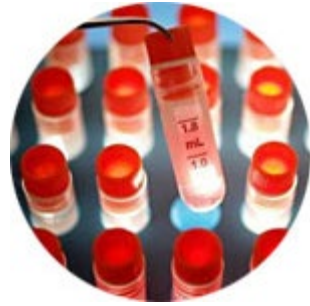
[Learn](#)



## Members area

Learn all about the benefits and privileges that are available to you as a UCLA Jonsson Comprehensive Cancer Center member

Explore



## Clinical trials at your fingertips

Connect you and your patients with clinical trials at UCLA. Our online search tool is easily accessible via all mobile devices and tablets

Discover



## Shared resources

We provide several shared resources at JCCC, and over 70 additional shared resources at UCLA, to help support your research

Connect



Want to unsubscribe? [Click here](#). Questions? Email us at [newsletter@mednet.ucla.edu](mailto:newsletter@mednet.ucla.edu).

© 2016 UCLA Jonsson Comprehensive Cancer Center. All Rights Reserved.

[Terms of Use](#) | [Privacy Practices](#) | [About our Website](#)

