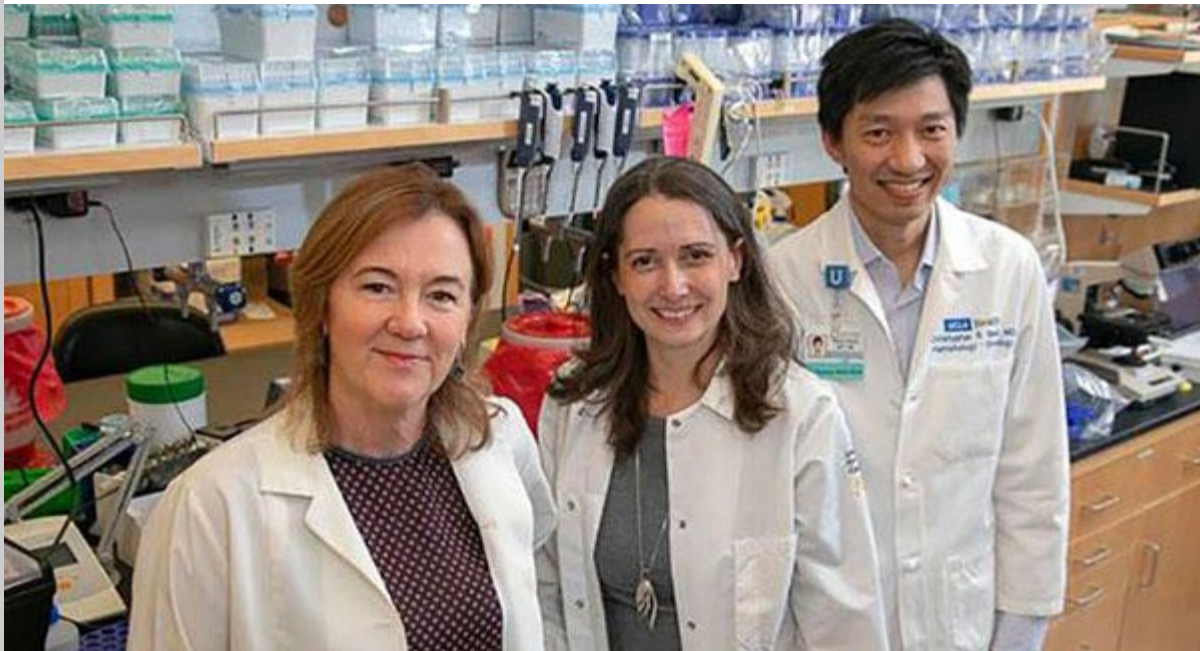


**UCLA** Jonsson Comprehensive Cancer Center

UCLA scientists create renewable source of cancer-fighting T cells

A new study led by Gay Crooks (left, with Amélie Montel-Hagen and Christopher Seet) is the first to demonstrate a technique for coaxing pluripotent stem cells — which can give rise to every cell type in the body and which can be grown indefinitely in the lab — into becoming mature T cells capable of killing tumor cells. The findings could point the way toward “off-the-shelf” T cell therapies that are more readily available to patients. [\[Read story\]](#)



Industry payments unequal across gender for radiation oncologists

UCLA researchers found female radiation oncologists received smaller-than-expected percentage of total industry payments

[Read more](#)



Biostatistics professor appointed to carcinogen committee

Catherine Crespi will help California office to identify chemicals that have been shown through scientific testing to cause cancer

[Read more](#)



Researchers discover common markers of tumor hypoxia

Landmark pan-cancer study analyzes mutation signatures of low oxygen in more than 8,000 tumors

[Read more](#)

RESEARCHER MINUTE
with **Dr. Josh Sasine**
UCLA Jonsson Comprehensive Cancer Center

Dr. Josh Sasine studies CAR T and other immune system approaches to treat cancer

In this video profile, UCLA's Dr. Josh Sasine describes his connection to multiple myeloma and why he is looking for new ways to treat this cancer that accumulates in the bone marrow. Dr. Sasine is a hematologist and oncologist with the UCLA Jonsson Comprehensive Cancer Center. [\[Watch video\]](#)



Tumors not as addicted to glucose as previously thought

Findings could bring about a better understanding of many cancers' metabolic needs and lead to the development of more effective therapies

[Read more](#)



Neurosurgeon-scientist honored for work in lab and the clinic

Dr. Linda Liau has been awarded the Abhijit Guha Award for her pioneering work on treating brain tumors.

[Read more](#)



Professor elected to the American Society for Clinical Investigation

Dr. Siavash Kurdistan has been elected as members of the ASCI, one of the oldest and most esteemed nonprofit honor societies of physician-scientists

[Read more](#)



UCLA Jonsson Cancer Center Foundation

Did you know?

The Jonsson Cancer Center Foundation (JCCF), founded in 1945 by a group of volunteers dedicated to cancer research at UCLA, is a 501(c)(3) that exists for the express purpose of raising and distributing funds to support life-changing cancer research at the UCLA Jonsson Comprehensive Cancer Center (JCCC). Donations to the JCCF help fund Seed Grants, Impact Grants and other high-priority, multi-disciplinary JCCC cancer research efforts focused on rapidly translating discoveries made in the laboratory into improved screening, treatment and prevention. The JCCF's 10 staff members work with individuals at all levels who wish to make an impact on the future of cancer research through philanthropy. If you'd like to learn more about the JCCF or know someone who may be interested in making a donation to advance the JCCC's work, please contact us at (310) 206-0675 or jccf@mednet.ucla.edu.

Funding opportunities

As a member, you can access all the latest intramural and extramural research grant opportunities via our UCLA CCLE online resource

[Learn](#)

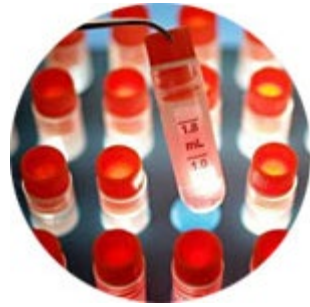


Members area

Learn all about the benefits and privileges that are available to you as a UCLA Jonsson Comprehensive Cancer Center member



Explore



Clinical trials at your fingertips

Connect you and your patients with clinical trials at UCLA. Our online search tool is easily accessible via all mobile devices and tablets

Discover



Shared resources

We provide several shared resources at JCCC, and over 70 additional shared resources at UCLA, to help support your research

Connect



Want to unsubscribe? [Click here](#). Questions? Email us at newsletter@mednet.ucla.edu.

© 2016 UCLA Jonsson Comprehensive Cancer Center. All Rights Reserved.

[Terms of Use](#) | [Privacy Practices](#) | [About our Website](#)

