



**UCLA** Jonsson Comprehensive Cancer Center



Cancer researchers and clinicians like you continuously work to develop better ways to detect, treat and prevent cancer. This month, the JCCF's 2nd annual Make Cancer Less Scary™ campaign will be urging the public to support highest priority cancer research here at the JCCC. We'll be promoting the campaign over the next few weeks leading up to Halloween on [Facebook](#) and [Twitter](#). Some of our posts will even include videos featuring your fellow physician-scientists via our [YouTube channel](#), so if you don't already, please be sure to follow us on social media! And share the giving link with someone you know who wants to join you in making cancer less scary for patients and their families at [www.MakeCancerLessScary.com](http://www.MakeCancerLessScary.com).



### Researcher awarded \$1M to study molecular changes in cancer

Dr. Ilsa Garraway's study will focus on veterans, to improve staging, prognostic and predictive biomarkers that aid in clinical management of prostate cancer

[Learn more](#)

Therapy targeting glucose in brain



### cancer shows early promise

UCLA-led study finds drug combo disrupts and exploits glucose intake, promoting glioblastoma cell death and stimulating tumor regression

[Read more](#)



### Scientist honored for research in molecular mechanisms of cancer

Dr. Guillaume Chanfreau honored with ACS' Giants of Science Determination Award, bestowed annually for success in a critical area of continuing research

[Learn more](#)



### Scientist honored for research studying the complexity of cancer

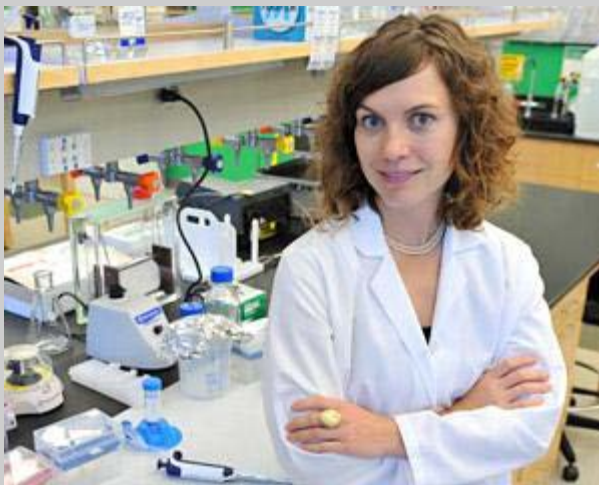
Dr. Thomas Graeber has received ACS' Giants of Science Passion Award, awarded annually to a leading figure in their specific field of cancer research

[Learn more](#)



## After clinical testing at UCLA, immunotherapy drug approved by FDA to treat stomach cancer

Pembrolizumab has now been approved by the U.S. Food & Drug Administration to treat people with metastatic gastric adenocarcinoma, the most common form of stomach cancer. UCLA was the leader of the U.S. arm of the international collaboration, and the clinical studies were conducted by Dr. Zev Wainberg. The research that led to the approval was conducted at UCLA and 67 sites in the U.S., Europe, South America and Asia. [Read more](#)



### Method to measure cell stiffness may improve cancer treatments

Physicians could use the method to track how a drug affects a patient's cancer cells over time

[Learn more](#)

### Scientists awarded \$1M to advance prostate cancer research

Drs. Johannes Czernin and Caius Radu to receive Prostate Cancer Foundation grant to fund preclinical studies of a novel radiation-emitting targeted therapy





[Learn more](#)



### Early career scientist receives prestigious recognition

Dr. Erina Vlashi awarded \$100k grant from ASTRO to study how exposure to ionizing radiation alters the metabolic state of tumor cells

[Learn more](#)



### Cancer therapy may change a patient's sense of taste

Altered taste and muted taste are a "very common nutritional change" for those undergoing chemo and radiation therapy, and dependent on cancer type

[Read more](#)



## With \$3M grant from Stand Up to Cancer, scientist to study how new combination therapy could overcome melanoma resistance to immunotherapy

Dr. Antoni Ribas, director of the UCLA Jonsson Comprehensive Cancer Center's Tumor Immunology Program, has received a \$3 million grant from Stand Up to Cancer to study how the combination of ipilimumab and nivolumab factors could reverse primary anti-PD-1 resistance in advanced melanoma. [Read more](#)

### Funding opportunities

As a member, you can access all the latest intramural and extramural research grant opportunities via our UCLA CCLE online resource

[Learn](#)

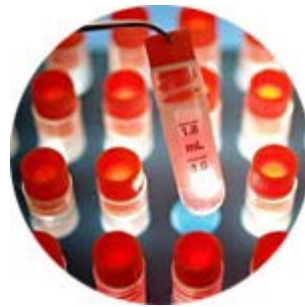


### Members area

Visit this new area of our website to learn all about the benefits and privileges that are available to you as a Jonsson Cancer Center member



Explore



### Clinical trials at your fingertips

Connect you and your patients with clinical trials at UCLA. Our online search tool is easily accessible via all mobile devices and tablets

Discover



### Shared resources

We provide several shared resources at JCCC, and over 70 additional shared resources at UCLA, to help support your research

Connect



Want to unsubscribe? [Click here](#). Questions? Email us at [newsletter@mednet.ucla.edu](mailto:newsletter@mednet.ucla.edu).

© 2016 UCLA Jonsson Comprehensive Cancer Center. All Rights Reserved.

[Terms of Use](#) | [Privacy Practices](#) | [About our Website](#)

