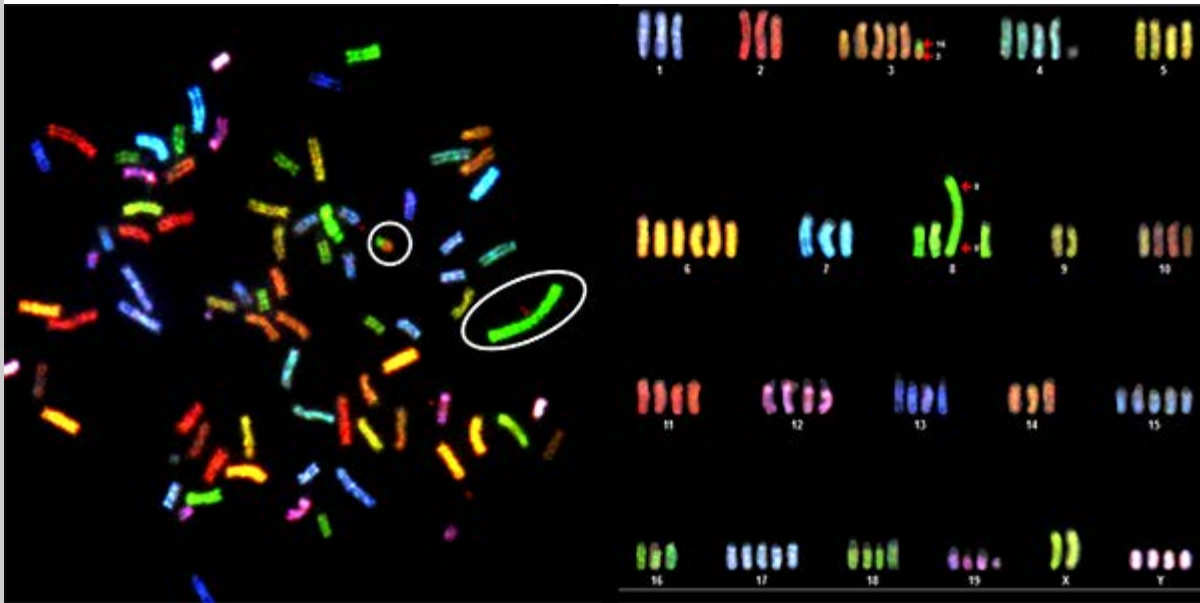




## UCLA Jonsson Comprehensive Cancer Center



### DNA patterns can unlock how glucose metabolism drives cancer

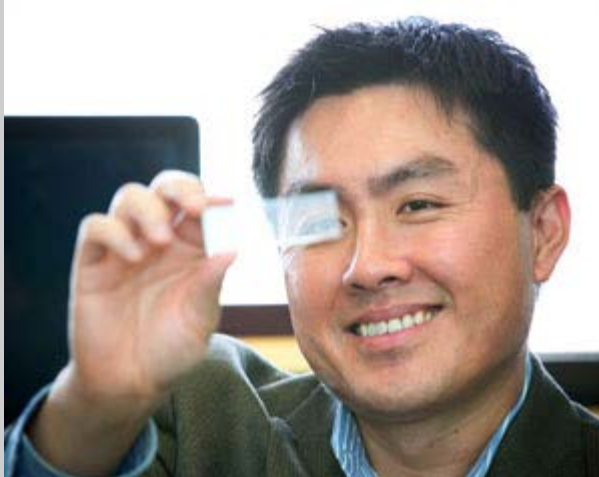
A new multi-year study of DNA patterns in tumor cells suggests that these aberrant genetic signatures are not random but reflect selective forces in tumor evolution. The research, led by JCCC's Dr. Thomas Graeber, further demonstrates that these changes drive glucose metabolism in cells, which improves the fitness of tumors and can lead to accelerated cancer growth.

[Read more](#)

### Why do some cancers not respond to immunotherapy?

UCLA-led study finds people with cancers containing genetic mutations JAK1 or JAK2 will have little or no benefit from the immunotherapy drug pembrolizumab.

[Read more](#)



### AACR honors UCLA scientist for pioneering melanoma research

The organization has honored Dr. Roger Lo with its first annual Waun Ki Hong Award for Outstanding Achievement in Cancer Research

[Read more](#)



### Combo therapy for glioblastoma shows promising early results

A new study suggests combining a UCLA-developed vaccine with other experimental therapies shows promise for reducing the size of brain tumors

[Learn more](#)



## The unexpected intersection between art and science

It's a common misconception that art and science are vastly different; that they never overlap. But creativity is as essential to the scientific process as it is to the artistic method. Artists and scientists share a curiosity for the unknown, an appreciation for the beauty of the worlds they explore and an interest in creating something new. Here, watch a handful of our researchers discuss the parallels between art and science and the sometimes unexpected intersections between the two pursuits. [Click to watch the video](#)



### UCLA receives \$3.2M grant to optimize patient selection

Dr. Edward Garon has received a five-year NIH grant to advance the understanding of which people with NSCLC respond to immunotherapy

[Learn more](#)

### Creating a roadmap to more personalized cancer treatment

UCLA study finds combo treatment can improve survival in people with head and neck squamous cell carcinoma and the KRAS-variant inherited genetic mutation

[Learn more](#)



## Supporting your work year-round

The Jonsson Cancer Center Foundation (JCCF) exists for the express purpose of raising and distributing funds to support the life-changing cancer research you conduct every day. JCCF is always working to accelerate the pace of research through philanthropy and regularly solicits gifts from donors who share our mission. For example, during Halloween, the JCCF used email and social media ([Facebook](#) and [Twitter](#)) to encourage donations as part of our “Make Cancer Less Scary” campaign. And this Valentine’s Day, we promoted our eCards to donors who make an online gift. These are just a couple of the ways we generate vital funding. Know someone who might want to help end cancer through research? Then please consider sharing our [donation page](#) with them. To learn more about how the JCCF helps fuel your research, [please email](#) Francesca Cota.

## Funding opportunities

As a member, you can access all the latest intramural and extramural research grant opportunities via our UCLA CCLE online resource



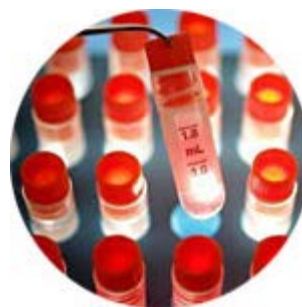
Learn



## Members area

Visit this new area of our website to learn all about the benefits and privileges that are available to you as a Jonsson Cancer Center member

Explore



## Clinical trials at your fingertips

Connect you and your patients with clinical trials at UCLA. Our online search tool is easily accessible via all mobile devices and tablets

Discover



## Shared resources

We provide several shared resources at JCCC, and over 70 additional shared resources at UCLA, to help support your research

Connect



---

Want to unsubscribe? [Click here](#). Questions? Email us at [newsletter@mednet.ucla.edu](mailto:newsletter@mednet.ucla.edu).

© 2016 UCLA Jonsson Comprehensive Cancer Center. All Rights Reserved.

[Terms of Use](#) | [Privacy Practices](#) | [About our Website](#)

