



## UCLA Jonsson Comprehensive Cancer Center



### UCLA, White House team up to eclipse cancer

On Wednesday, June 29 2016, The White House, UCLA Health and UCLA Jonsson Comprehensive Cancer Center held the UCLA Cancer Moonshot Summit, an aspirational discussion with JCCC cancer researchers. The event's panel was moderated by Dr. Folasade May and featured Drs. Dennis Slamon, Patricia Ganz, Maie St. John and Noah Federman. Follow the link below to listen to the full audio of the panel via YouTube.

[Listen](#)



### Scientists discover combo therapy to treat brain cancer

UCLA researchers have developed a new therapy that harnesses an antibody blockade to prevent brain cancer from shielding itself from immune cells

[Read more](#)



### UCLA physician awarded highest honor for brachytherapy research

Dr. Jeffrey Demanes has received the prestigious Ulrich Henschke Award, in recognition of his career commitment to the use of brachytherapy in cancer

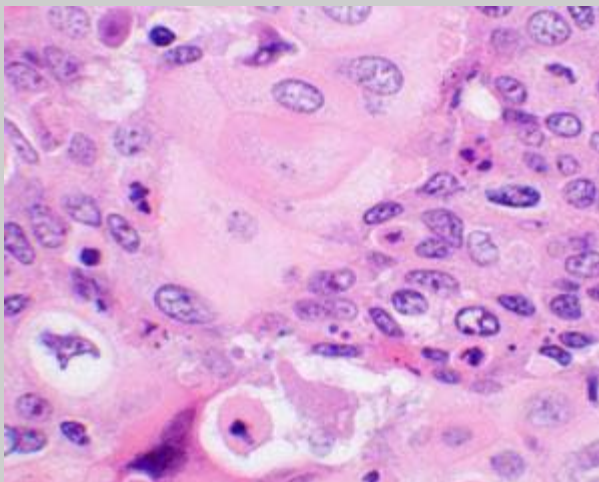
[Read more](#)



### UCLA collaboration finds potential treatment breakthrough for GBM

Cross-institution phase I study led by Dr. Timothy Cloughesy successfully demonstrates use of a modified virus in treatment of people with brain cancer

[Read more](#)



### Protein found that could prevent tumor growth in cervical cancer

Led by Dr. Eri Srivatsan, a new study shows the protein cystatin E/M can inhibit cellular inflammation, a major contributor to the growth of cervical cancer

[Read more](#)

### Q3 clinical trial pocket guides available July 28

Free to all members, our handy pocket guide provides a complete list of current trials by anatomic site. To get your copy, email Jillian Grening via the link below.

[Email](#)



## Donors help accelerate the pace of cancer research

The JCCF is grateful to all 162 Lifeline Connection members for giving more than \$700,000 in unrestricted donations over the last 12 months! [Click here](#) to view the 2015-2016 Lifeline Connection Honor Roll acknowledging our members' generosity. The work of virtually every JCCC member has benefited from Lifeline Connection donations as these gifts support JCCC highest priorities through Seed Grants, Impact Grants and New Technology. Lifeline membership is open to all JCCC members, and is tax-deductible. Donate \$100 monthly or \$1,000+ annually to join this special cadre of partners for a cure. [Click here](#) or contact Francesca Cota [via email](#) to join or renew your Lifeline Connection membership.

### Funding opportunities

As a member, you can access all the latest intramural and extramural research grant opportunities via our UCLA CCLE online resource



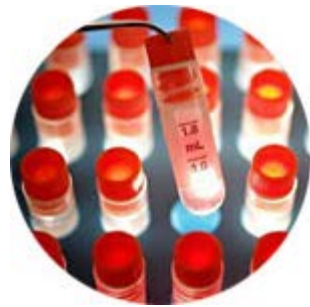
Learn



## Members area

Visit this new area of our website to learn all about the benefits and privileges that are available to you as a Jonsson Cancer Center member

Explore



## Clinical trials at your fingertips

Connect you and your patients with clinical trials at UCLA. Our online search tool is easily accessible via all mobile devices and tablets

Discover



## Shared resources

We provide several shared resources at JCCC, and over 70 additional shared resources at UCLA, to help support your research

Connect



---

Want to unsubscribe? [Click here](#). Questions? Email us at [newsletter@mednet.ucla.edu](mailto:newsletter@mednet.ucla.edu).

2016 UCLA Jonsson Comprehensive Cancer Center. All Rights Reserved.

[Terms of Use](#) | [Privacy Practices](#) | [About our Website](#)

