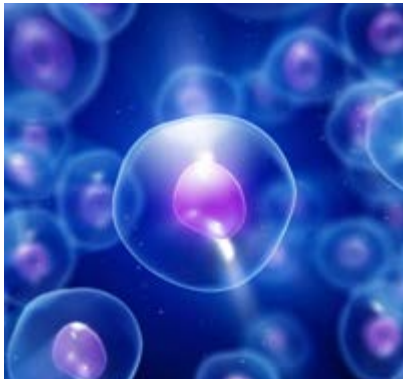


UCLA Jonsson Comprehensive Cancer Center NEWSLETTER



UCLA Scientists Discover How Adult Stem Cell Regulation Contributes to Lung Cancer

Led by JCCC member Dr. Brigitte Gomperts, UCLA researchers have discovered how factors in the regulation of the growth of adult stem cells that regenerate tissue for repair in the lungs can lead to the formation of pre-cancerous lesions. This process is thought to be the first stage in the development of lung cancer, and these findings show potential for new personalized treatments for the deadly disease. [Read more >](#)

JCCC Member Resources

- Visit our [membership info page](#) to find out all of the benefits and privileges that are available to you as a JCCC member.

Clinical Trials at Your Fingertips

- Connect you and your patients with clinical trials at UCLA. [Click here](#) to learn all about how you can use any mobile device (including your smartphone) to access JCCC's clinical trials database.

Shared Resources at UCLA

- As a member you have access to several shared resources at JCCC, and over 70 additional shared resources at UCLA. Visit the [Shared Resources](#) page to learn more.

Update Your Member Profile

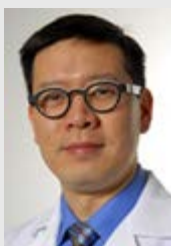
- Do you need a new member photo? Have new publications? Want to update your bio? Read the [member profile guidelines](#) to learn how.

Funding Opportunities

- Members can now [access online](#) a complete list of the latest research grant opportunities directly from the JCCC website.

Latest News

Novel Robot-Assisted Surgery Technique Improves Removal of Kidney Cancer Tumors



In the largest multicenter study of its kind, a new surgical technique called robot-assisted retroperitoneoscopic partial nephrectomy (RARNP) has been shown to produce more favorable cancer control outcomes than traditional thermal ablation methods. The study, led by JCCC member Dr. Jim Hu, also indicates there was significant variance between different surgeons in the amount of time the main blood supply to the kidney was blocked off during surgery, which can be important in lessening post-treatment complications.

[Read more >](#)

JCCC Online Funding Resource Available to All Members



Jonsson Cancer Center Foundation at UCLA (JCCF) is the fundraising arm for the JCCC. JCCF intramural funding opportunities fall into two programs: Seed Grants and Impact Grants. To aid members in the application process for these programs, JCCC Senior Leaders created the JCCC Common Collaborative Learning Environment (CCLE). [Follow this link](#) to enroll in the CCLE for access to grant guidelines, downloadable applications and online submission tool.

Help Accelerate the Pace of Cancer Research



Virtually every JCCC member has benefited from Lifeline Connection donations. These gifts support JCCC highest priorities—seed grants, strategic investment in members and funds for new technology. Lifeline membership is open to anyone—including all JCCC members. Donate \$100 monthly or \$1,000+ annually to join this special cadre of partners for a cure. [Click here](#) or contact Francesca Roberto (froberto@mednet.ucla.edu) to join or renew your Lifeline Connection membership.

Q3 Clinical Trials Pocket Guide Available July 22

Social Networking Tools

- JCCC is on Twitter, Facebook and YouTube. Learn how to follow us and stay connected!



Need to stay up-to-date on all currently open JCCC clinical trials for your research or clinical practice? JCCC's quarterly Clinical Trials Pocket Guide offers a complete list of current trials by anatomic site, in a handy pocket size that fits perfectly inside a lab coat. The 2014 Q3guide will be available on Tuesday, July 22, and it's free to all JCCC members. To reserve your copy, contact Emma Ashley at EAshley@mednet.ucla.edu.

© 2014 UCLA Jonsson Comprehensive Cancer Center. All Rights Reserved.

[Terms & Conditions](#) | [Privacy Practices](#) | [About the JCCC Website](#)

Have feedback on this newsletter? Direct your questions and comments to: newsletter@mednet.ucla.edu