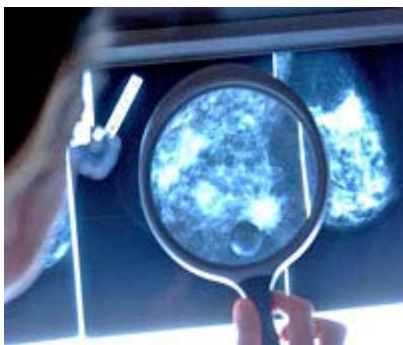


May 2013

UCLA Jonsson Comprehensive Cancer Center NEWSLETTER



Cancer Drug Receives Breakthrough Designation from FDA

An experimental drug investigated for the treatment of advanced breast cancer by JCCC researchers has received "Breakthrough Therapy" designation by the United States Food and Drug Administration (FDA). Preliminary results of a phase 2 study of the investigational drug, palbociclib, showed a significant increase in progression-free survival for patients with advanced breast cancer. [Read more here](#) about this amazing breakthrough.

JCCC Member Resources

- Visit our [membership info page](#) to find out all of the benefits and privileges that are available to you as a JCCC member.

Clinical Trials at Your Fingertips

- Connect you and your patients with clinical trials at UCLA. [Click here](#) to learn all about how you can use any mobile device (including your smartphone) to access JCCC's clinical trials database.

Shared Resources at UCLA

- As a member you have access to several shared resources at JCCC, and over 70 additional shared resources at UCLA. Visit the [Shared Resources page](#) to learn more.

Meet Your Fellow Members

- JCCC is a scientific community over 400 members strong. In our ongoing [Researcher Profiles](#) section, read detailed biographies of many of your fellow members.

Latest Grant Awards

Latest News

JCCF Welcomes New Executive Director



Scott Thompson recently became Executive Director of the Jonsson Cancer Center Foundation, succeeding Jonathan Page. Scott's highly successful fundraising career includes six years as Senior Director of Development for the University of Arizona Cancer Center, where under his leadership, annual fundraising revenues there increased 300%. Scott brings a profound commitment to our work, and looks forward to partnering with all JCCC members to build philanthropic support for the JCCC's mission.

UCLA Simms/Mann Center Director Receives Outstanding Clinical Care Award



Anne Coscarelli, Ph.D., director of the Simms/Mann-UCLA Center for Integrative Oncology and JCCC member, has been awarded the Outstanding Clinical Care Award for 2013 by the American Psychosocial Oncology Society. Under her direction, the Simms/Mann Center has become a national model for integrative patient care for those affected by cancer, offering educational and support services that combine psychological, nutritional, spiritual and complementary approaches to healing.

[Read more >](#)

EIF Revlon Run/Walk Only Days Away



You can help support longer, healthier lives for women by joining the UCLA Fights Women's Cancer team, led by co-captains Dr. Sara Hurvitz and Dr. Rich Finn. Proceeds from the EIF Revlon Run/Walk for Women Los Angeles on May 11th will help make it possible for the JCCC to develop new and innovative ways to target and treat women's cancers. Support the leading beneficiary of this event by making a [donation](#) towards the team's fundraising goal.

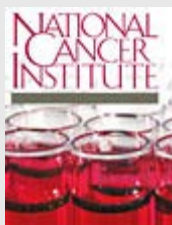
- All new funding awards are now being archived monthly on the JCCC website. [Click here](#) for a complete listing of the latest recipients and their awards.

Social Networking Tools

- JCCC is on Twitter, Facebook and YouTube. Learn how to follow us and stay connected!



National Cancer Institute Site Visit Scheduled for May 2013



A National Cancer Institute survey team will visit JCCC on Wednesday, May 22, to conduct an on-site review as part of the competitive renewal process for a five-year Cancer Center Support Grant. The review team will consist of cancer specialists from around the nation who are selected by the NCI and who will meet with JCCC senior leadership. JCCC received its current Support Grant of over \$28 million in 2008 after earning a numerical score equivalent to excellent from the NCI.

© 2013 UCLA Jonsson Comprehensive Cancer Center. All Rights Reserved.

[Terms & Conditions](#) | [Privacy Practices](#) | [About the JCCC Website](#)

Have feedback on this newsletter? Direct your questions and comments to: newsletter@mednet.ucla.edu